



### APPLICATIONS

BMWS-E-D-SP-E4BT-BLE-SR-WH is a self-powered switch that converts the mechanical energy generated from button presses into electrical energy for operation. Each press on a button generates a Bluetooth signal that sends data packets to the associated BlueMesh network.

### TECHNICAL DATA

Switch Type: Push button  
 Number of button: 4  
 Power Supply: Self-powered  
 Bluetooth Version: 5.0  
 Communication Mode: BLE  
 Transmit Power: 0dBm  
 Distance: 66ft /20m (outdoors) 33ft/10m (indoors)  
 Operating Temperature: -20~+55°C(-4-131°F)  
 Life Time: ≥100,000 presses  
 Shell Material: PC, Glass  
 Installation Method: Tape mounting / Screw locking  
 Certification: CE

### Color Option

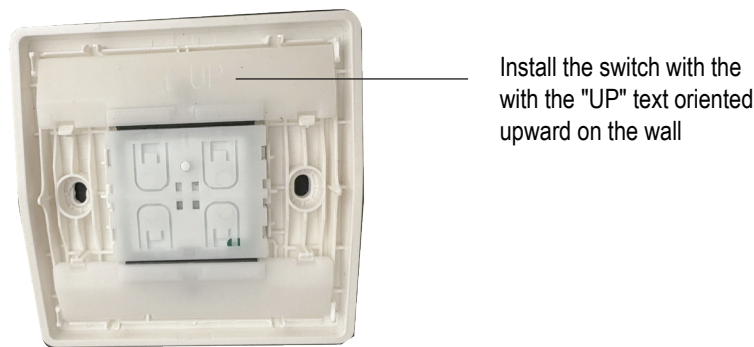


### Installation Note

Distinguish the top and bottom of the switch according to the laser engraved text on the back of the switch.



Alternatively, remove the switch panel to confirm which side of the switch is to face upward. Refer to the figure on the next page.



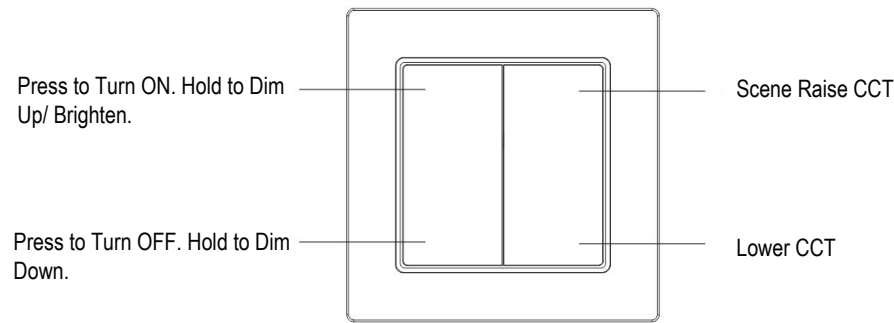
Install the switch with the with the "UP" text oriented upward on the wall

Keys Function

Once you have distinguished the orientation of the switch buttons, you can determine the function corresponding to each button.

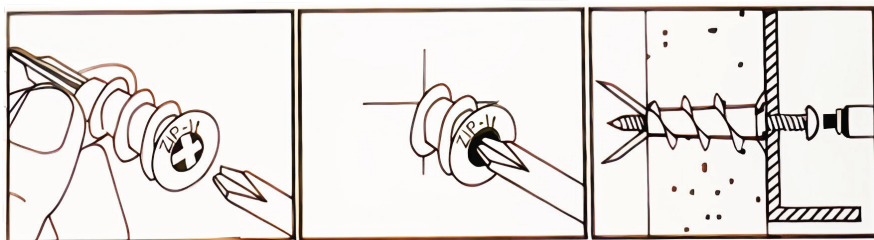
Left Switch	Top Button: Click to turn on the light, hold to brighten.
	Down Button: Click to turn off the light, hold to brighten.
Right Switch	Top Button: activate Scene A, hold to raise color temperature (Cooler White).
	Down Button: Click to activate Scene B, hold to lower color temperature (Warmer White).

NOTE: Color temperature adjustments are only available for areas where a compatible dimmable white light fixture and the appropriate version of Silvar firmware have been added.

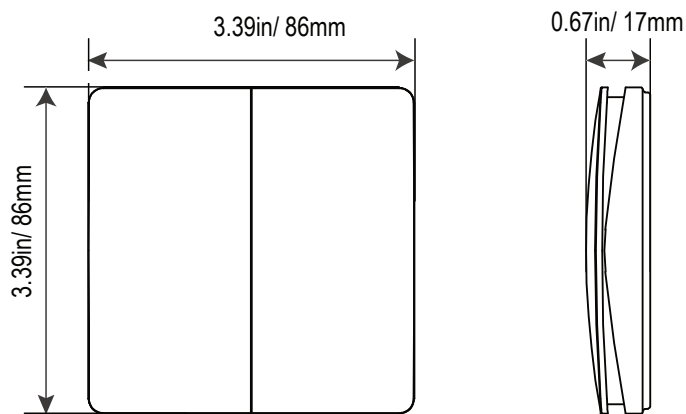


### Installation Method

#### Self-Drilling Drywall Anchors



### PHYSICAL DIMENSIONS



### WARRANTY

Five year limited warranty.

Specifications subject to change without notice.